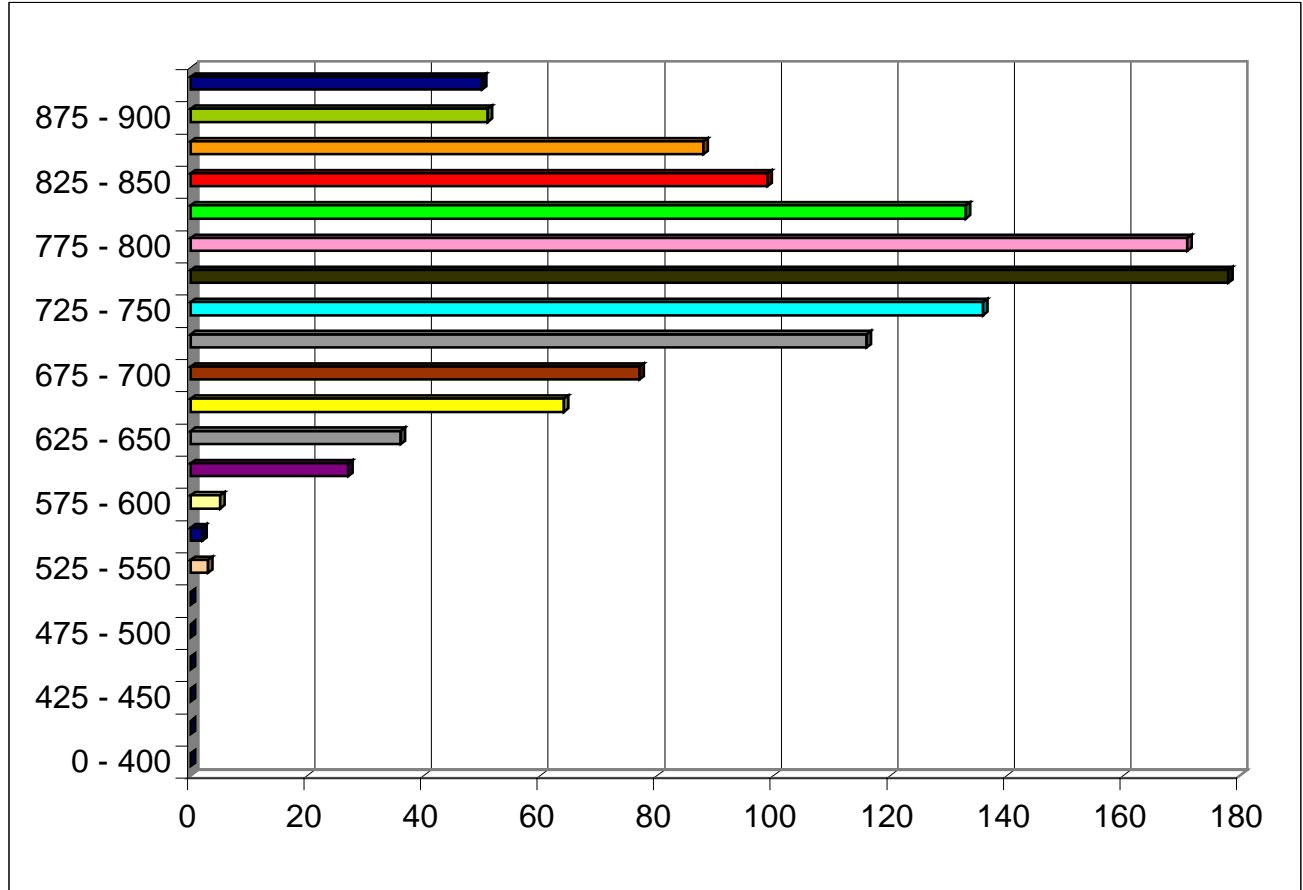




Distribution of Cattle By Carcass Weight

From 1/1/99 to 02/24/2000 1:20:26 PM



WT Range	Animals
0 - 400	0
400 - 425	0
425 - 450	0
450 - 475	0
475 - 500	0
500 - 525	0
525 - 550	3
550 - 575	2
575 - 600	5
600 - 625	27
625 - 650	36
650 - 675	64
675 - 700	77
700 - 725	116
725 - 750	136
750 - 775	178
775 - 800	171
800 - 825	133
825 - 850	99
850 - 875	88
875 - 900	51
900 - 2000	50
Total:	1236

Wednesday, March 29, 2000

Prepared by AgInfoLink, Inc.