

Share Data

- ▶ Share Data is used to transfer copies of Events:Details to disk or attach to an e-mail message to allow data transfer between multiple computers.
- ▶ When AgInfoLink Data Collection software installs, an icon appears on the desktop called “Share Data.”
- ▶ Double-click this icon to open the Share Data application.

Share Data

Use Default Values

If desired, you can specify your email address so recipients can respond to you.

If desired, you can select events that were created between specific dates and times.

Start Date: 11/24/2004 4:27:52 PM

End Date: 11/24/2004 9:04:54 PM

If desired, you can exclude a semi-colon delimited list of events from the export.

If desired, you can ignore the tracking database when exporting events.

Ignore Tracking Database

Source DB: C:\AgInfo\BeefLink\AgInfoEvents.mdb

Send to Disk or Pony Express LAN

Destination: ...

Tracking DB: ...

Send to Pony Express Internet

Email Address: aginfo@boulder.net

Tracking DB: ...

How many Events?

Create data files

Events: # Exported: v.1.00.0033

Share Data

- ▶ Share Data will automatically default Source DB as the current database where Events:Details are stored.
- ▶ Select “Send to Disk or Pony Express LAN.” Click the 3 dots to the right of the Destination field to browse to a location to create the Share Data file.

Share Data

Use Default Values

Source DB: C:\AgInfo\BeefLink\AgInfoEvents.mdb ...

Send to Disk or Pony Express LAN

Destination: ...

Tracking DB: ...

Send to Pony Express Internet

Email Address: aginfo@boulder.net

Tracking DB: ...

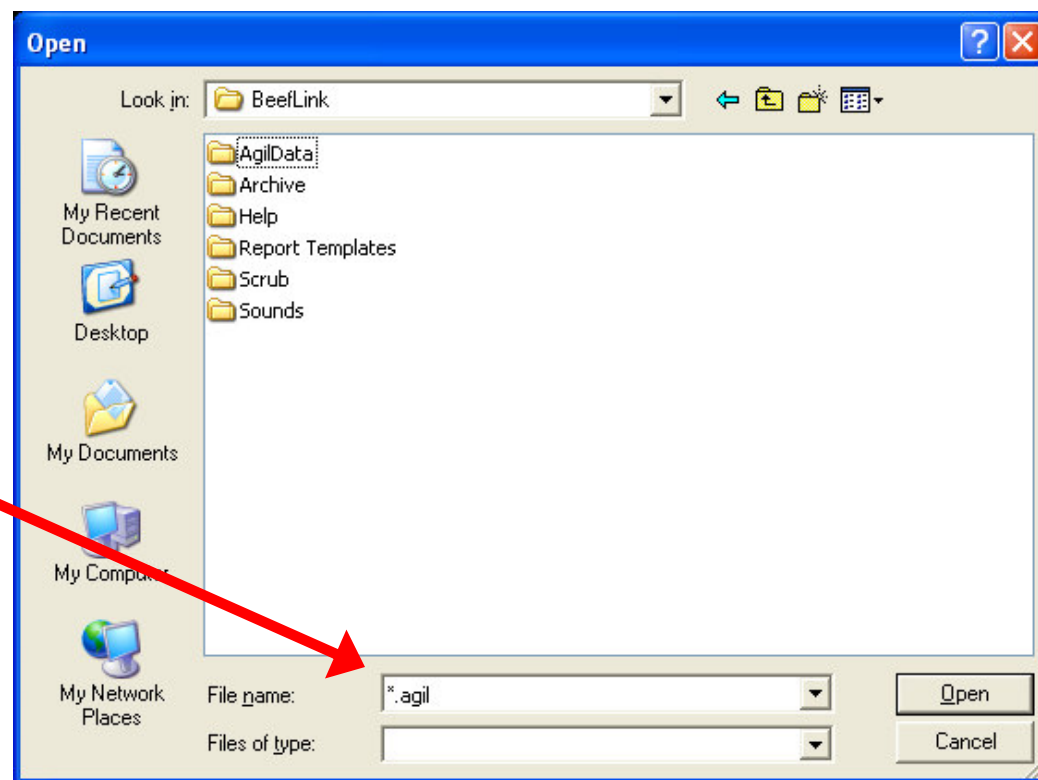
Ignore Tracking Database

How many Events? Create data files

Events: # Exported: v.1.00.0033

Share Data

- ▶ Choose a folder that is easy to remember and find, or choose the drive where the external disk is located.
 - ▶ i.e. E:/ Thumb drive
- ▶ In the File Name box, replace the asterisk (*) with the file name.
 - ▶ i.e. Share2010-12-30.agil
- ▶ It is also recommended to include the date in the file name so the most recent file can be located easily.
- ▶ After naming the file, click “Open”



Share Data

- ▶ The file path where the data will be stored will appear in the destination field.
- ▶ Click “How many Events” to count the number of Events to be shared.
- ▶ Click “Create data files” to make the files.
- ▶ After all the Events are exported, copy the file to a thumb-drive or attach it to an email message to share with the appropriate workstation.

Share Data

Use Default Values

Source DB: C:\AgInfo\AgInfoEvents.mdb

If desired, you can specify your email address so recipients can respond to you.

If desired, you can select events that were created between specific dates and times.

Start Date: 7/19/2000 6:30:48 AM

End Date: 1/7/2005 9:34:00 PM

If desired, you can exclude a semi-colon delimited list of events from the export.

Send to Disk or Pony Express LAN

Destination: C:\AgInfo\BeefLink\Share.2.17.2005.agil

Tracking DB:

Send to Pony Express Internet

Email Address:

Tracking DB:

Ignore Tracking Database

If desired, you can ignore the tracking database when exporting events.

How many Events? Create data files

Events: # Exported: v.1.00.0033

Share Data

- ▶ A “Tracking Database” can be created to keep track what data has already been shared. This will help keep the file size small when sharing with another PC. Another option is to check “Ignore Tracking Database” and share ALL data in the database every time.

Share Data

Use Default Values

If desired, you can specify your email address so recipients can respond to you.

If desired, you can select events that were created between specific dates and times.

Start Date: 7 /19/2000 6:30:48 AM

End Date: 1 /7 /2005 9:34:00 PM

If desired, you can exclude a semi-colon delimited list of events from the export.

If desired, you can ignore the tracking database when exporting events.

Ignore Tracking Database

Send to Disk or Pony Express LAN

Destination: C:\AgInfo\BeefLink\Share.2.17.2005.agil

Tracking DB: C:\AgInfo\BeefLink\tracking.mdb

Send to Pony Express Internet

Email Address:

Tracking DB: C:\AgInfo\BeefLink\tracking.mdb

How many Events? Create data files

Events: # Exported: v.1.00.0033

Importing BeefLink Data files: *.agil Files

- ▶ Once you have manually shared data using the Share Data program, you can move the file to another computer to populate the database or e-mail to another person to populate their database.
- ▶ The file will be located in the folder where you indicated during the Share Data process:
 - ▶ E.g: E:/Share2010-12-30.agil
- ▶ To transfer that data into another computer's local AgInfoLink data collection software:
 - ▶ Double-click on the attachment
 - ▶ The AgInfoLink application called "Transfer Events" will open

Importing BeefLink Data files: *.agil Files

- ▶ The Source DB is the location of the file and will appear automatically.
- ▶ The Destination DB is the location of the AgInfoEvents database where the data will be transferred.
- ▶ Click “How Many Events?” to see the count of Events that will be transferred.
- ▶ Click “Import Events” to start the transfer.

Transfer Events

Entity ID: **TOBINA.AGINFO.US**

Source DB: C:\Documents and Settings\IBM USER\Local Settings\Temporary Internet Files\OLK6E3\JoeFarmerUpdate\agil

Server Source:

Destination DB: C:\AgInfo\AgInfoEvents.mdb

Server Destination:

Report Template: C:\AgInfo\BeefLink\template.htm

Step: # Events # Transferred: # Errors: # Pre-Existing: v.1.01.0044

Importing BeefLink Data files: *.agil Files

Transfer Events

Entity ID: **TOBINA.AGINFO.US**

Source DB: C:\Documents and Settings\IBM USER\Local Settings\Temporary Internet Files\DLK6E3\JoeFarmerUpdate\agil ...

Server Source: ...

Destination DB: C:\AgInfo\AgInfoEvents.mdb ...

Server Destination: ...

Report Template: C:\AgInfo\BeefLink\template.htm ...

How Many Events? Import Event Generate Report

Step: # Events # Transferred: # Errors: # Pre-Existing: v.1.01.0044

- ▶ The status bar at the bottom of Transfer Events will show the total number of Events, count the number of Events as they are transferred, show the number of transfer errors, and if any Events are already in your database they will be counted under # Pre-Existing.
- ▶ When all the Events are imported, clicking on “Generate Report” will open a summary report of the imported data. This report includes the total number of Events imported, as well as a option to view the data from each Entity ID.
- ▶ This data has been updated now in your local database.